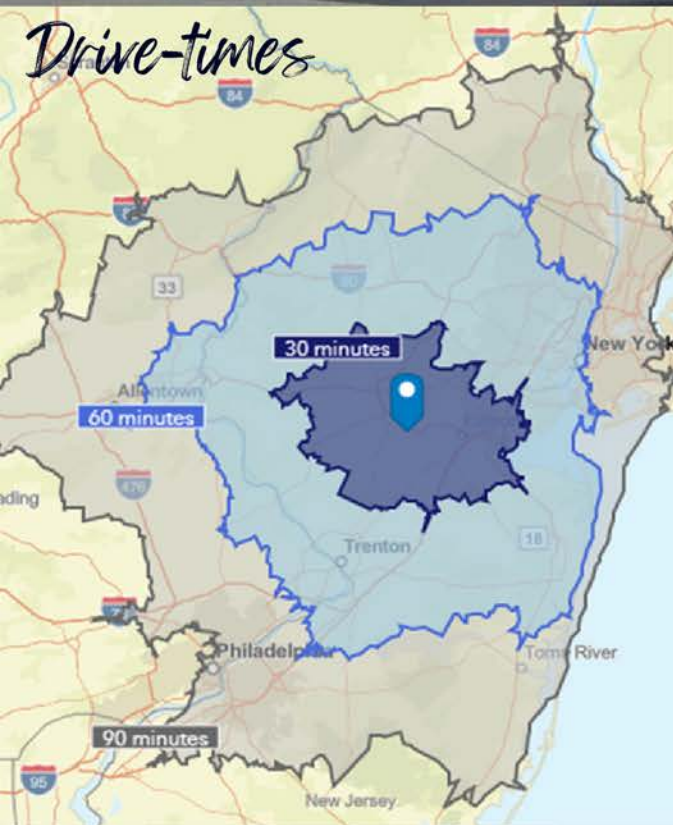




400 APGAR DRIVE

SOMERSET, NJ

19,112 SF



- +/- 5,125 SF OFFICE
- +/- 13,987 SF WAREHOUSE
- BUILT IN 1987
- ONE (1) LOADING DOCK
- ONE (1) DRIVE-IN DOOR
- 50' X 40' COLUMNS
- 22' CLEAR HEIGHT
- .33/3,000 SPRINKLER SYSTEM
- 800 AMP, 480V. 3-PHASE ELECTRICAL SERVICE
- AMPLE PARKING

3D TOUR     **COMING SOON**

400 APGAR DRIVE SOMERSET, NJ

SITE PLAN



FOR LEASE

APGAR DRIVE

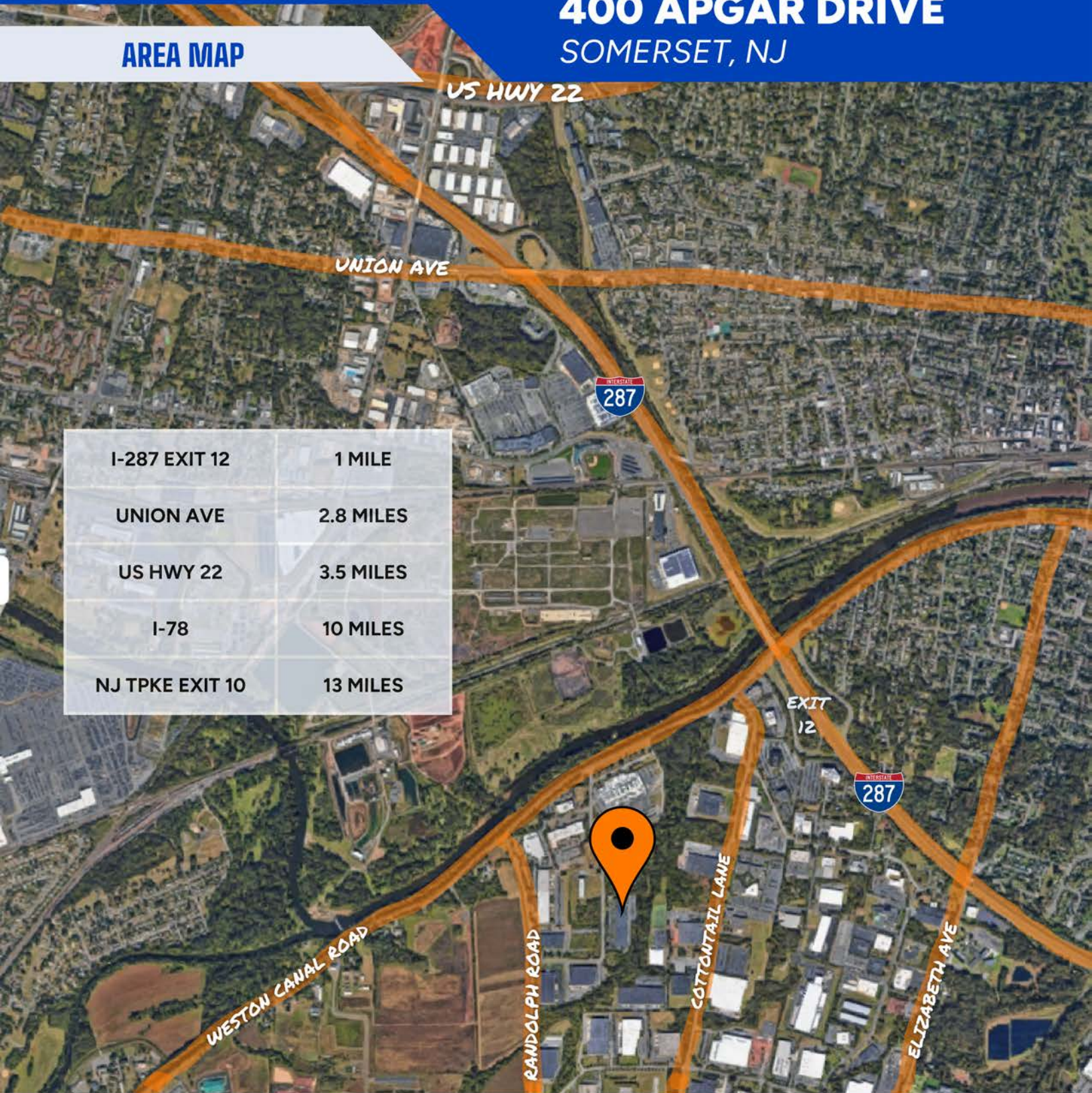
← RANDOLPH ROAD



400 APGAR DRIVE

SOMERSET, NJ

AREA MAP



I-287 EXIT 12	1 MILE
UNION AVE	2.8 MILES
US HWY 22	3.5 MILES
I-78	10 MILES
NJ TPKE EXIT 10	13 MILES

FOR MORE INFORMATION

JASON FISCH, BROKER | VICE PRESIDENT OF LEASING
☎ 732-258-3400 ✉ JASON.FISCH@GREEKREP.COM

PATRICK REISTROM | SENIOR LEASING ASSOCIATE
☎ 732-609-5829 ✉ PATRICK.REISTROM@GREEKREP.COM



1 KIMBERLY ROAD, SUITE 105
EAST BRUNSWICK, NJ 08816

