



3 JOANNA COURT EAST BRUNSWICK, NJ 9,600 SF

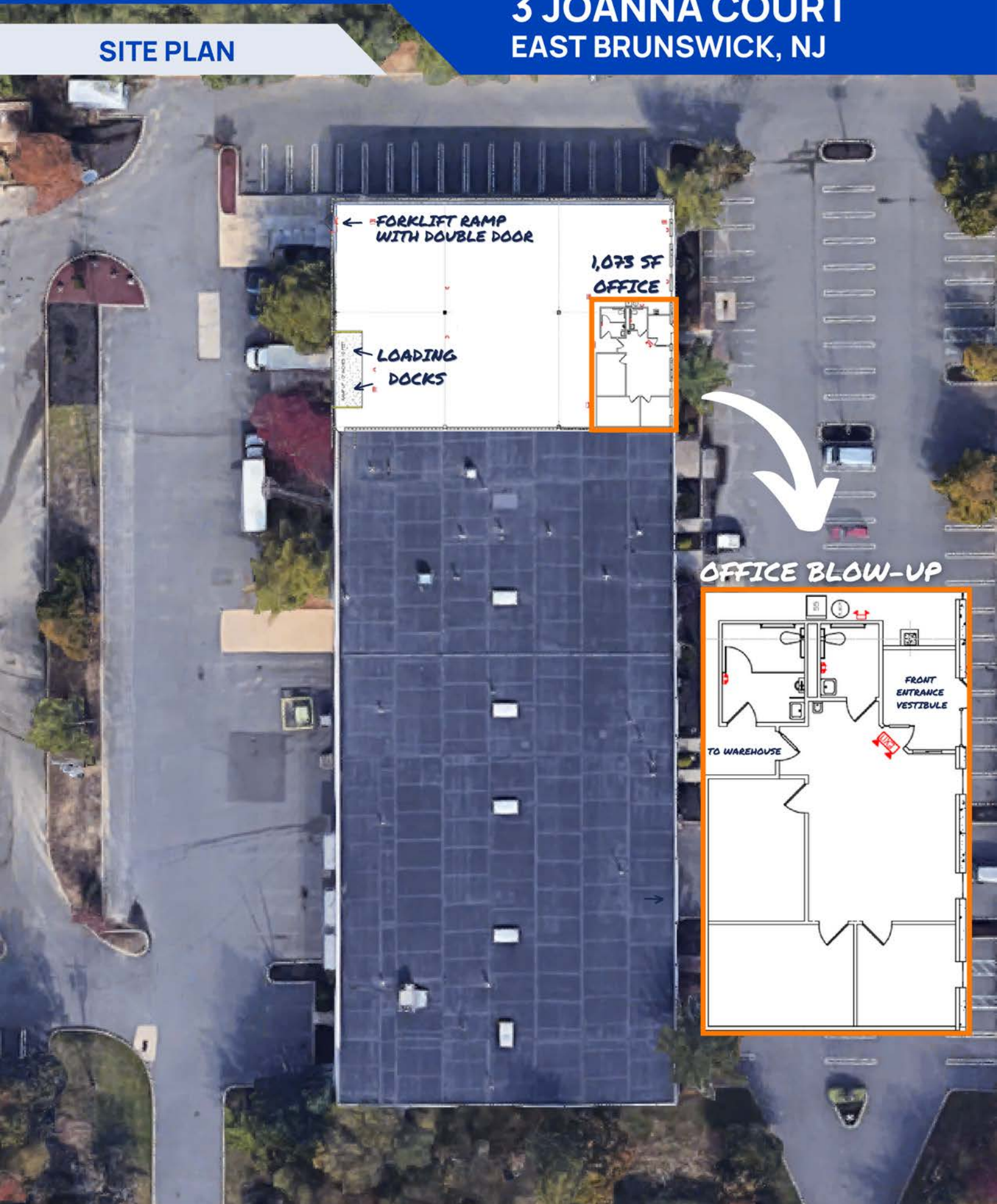


- 1,073 SF OFFICE
- 8,527 SF WAREHOUSE
- BUILT IN 1982
- TWO (2) LOADING DOCKS
- ONE (1) FORKLIFT RAMP W/ DOUBLE DOOR
- 40' X 40' COLUMNS
- 22' CLEAR HEIGHT
- .22/2,000 WET SPRINKLER SYSTEM
- 400 AMP, 480V, 3 PHASE ELECTRICAL SERVICE
- AMPLE PARKING

3D TOUR  **COMING SOON** 

3 JOANNA COURT EAST BRUNSWICK, NJ

SITE PLAN

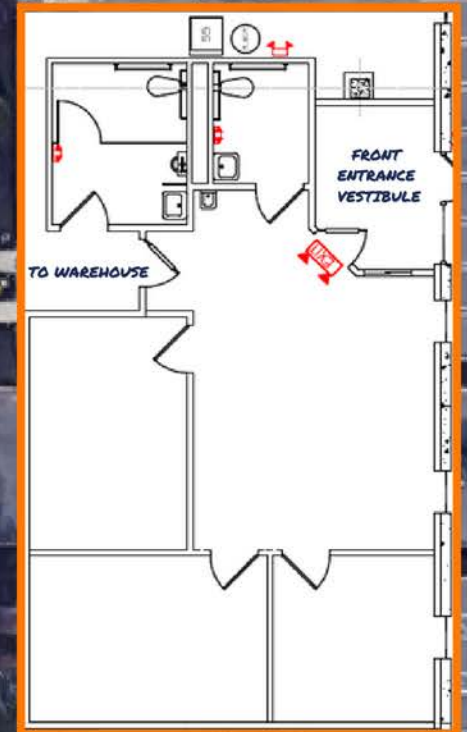


← FORKLIFT RAMP
WITH DOUBLE DOOR

1,073 SF
OFFICE

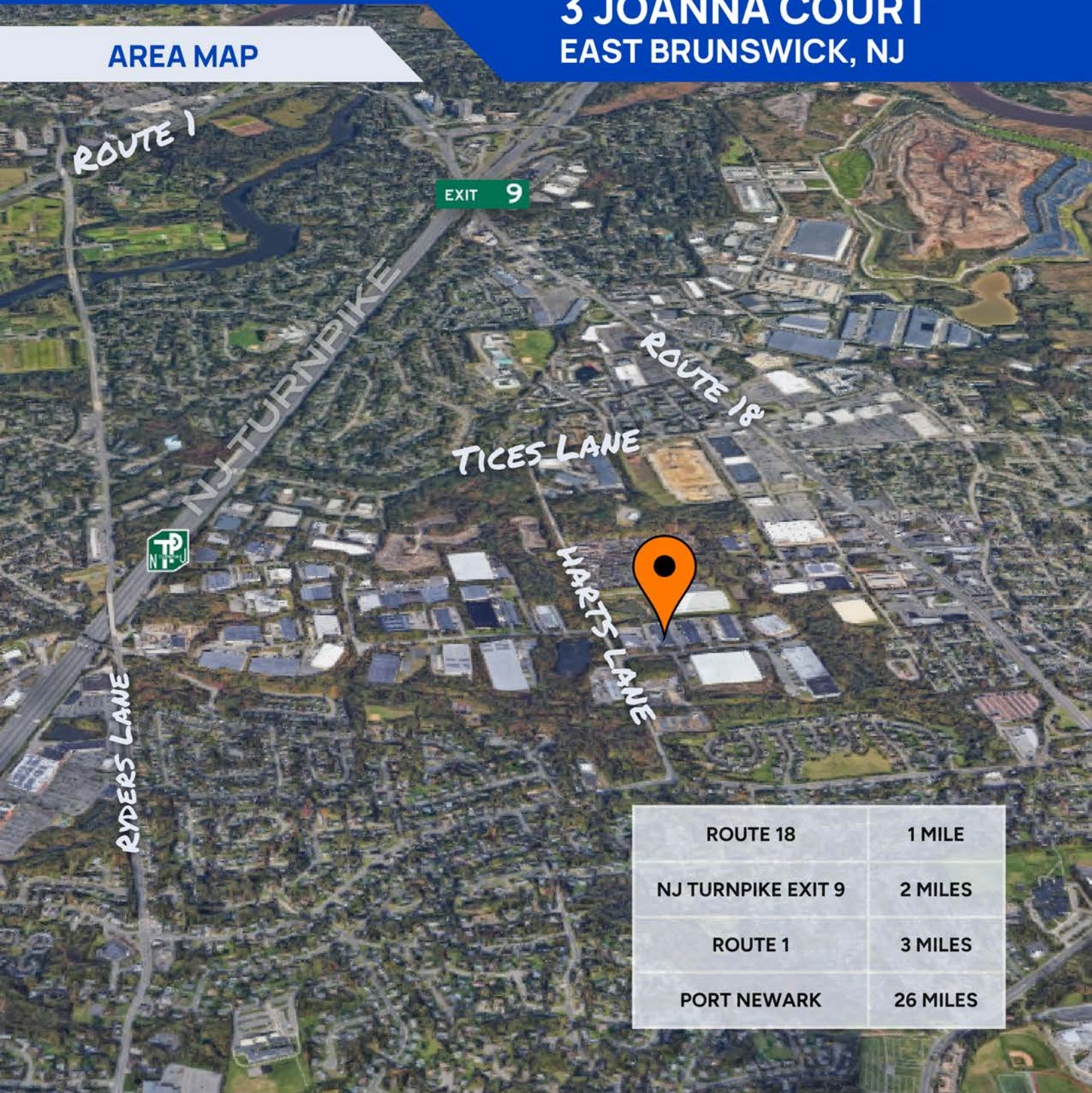
← LOADING
DOCKS

OFFICE BLOW-UP



3 JOANNA COURT EAST BRUNSWICK, NJ

AREA MAP



FOR MORE INFORMATION

JASON FISCH, BROKER | VICE PRESIDENT OF LEASING
☎ 732-258-3400 ✉ JASON.FISCH@GREEKREP.COM

PATRICK REISTROM | LEASING ASSOCIATE
☎ 732-609-5829 ✉ PATRICK.REISTROM@GREEKREP.COM



1 KIMBERLY ROAD, SUITE 105
EAST BRUNSWICK, NJ 08816

