



17 EDGEBORO ROAD

EAST BRUNSWICK, NJ

9,600 SF

DRIVE-TIMES

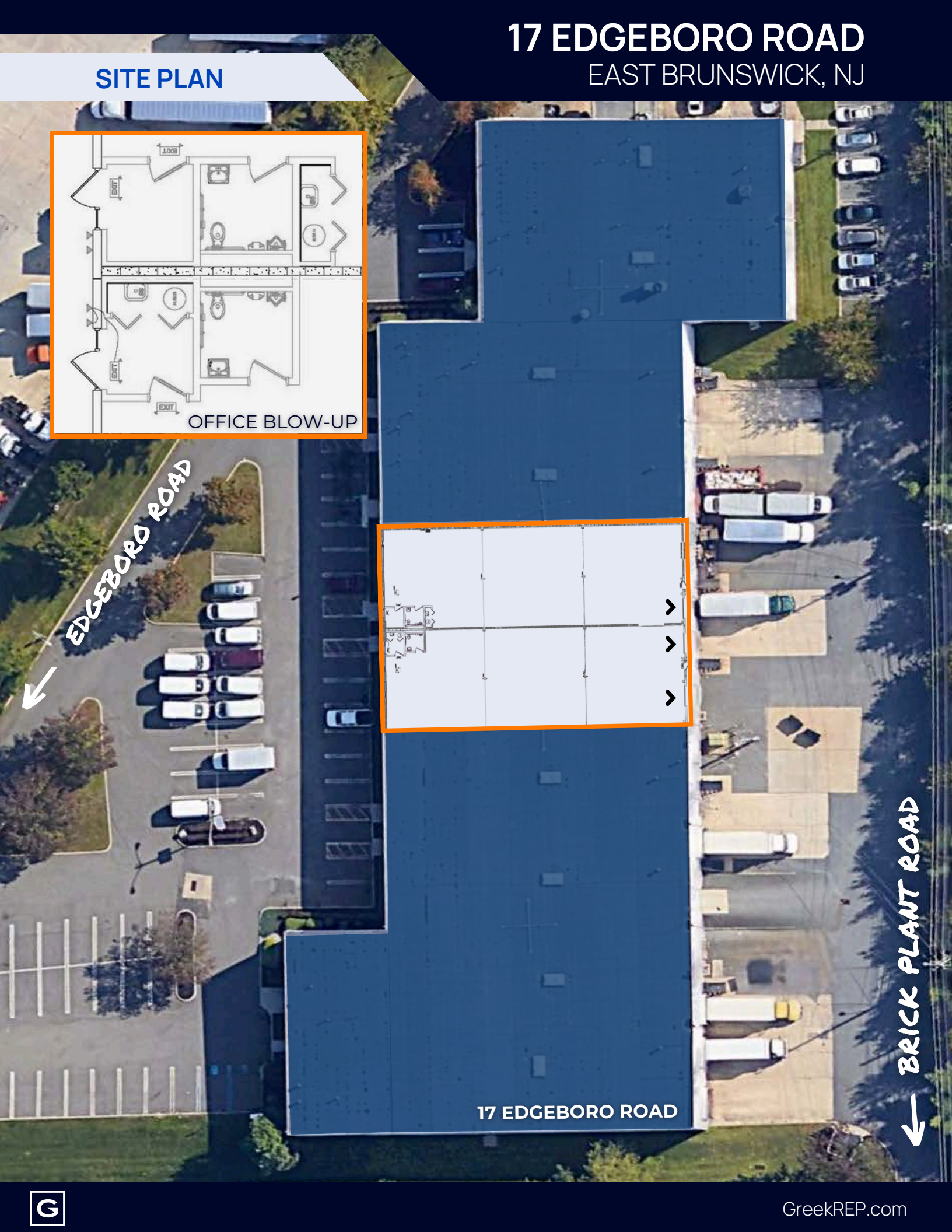
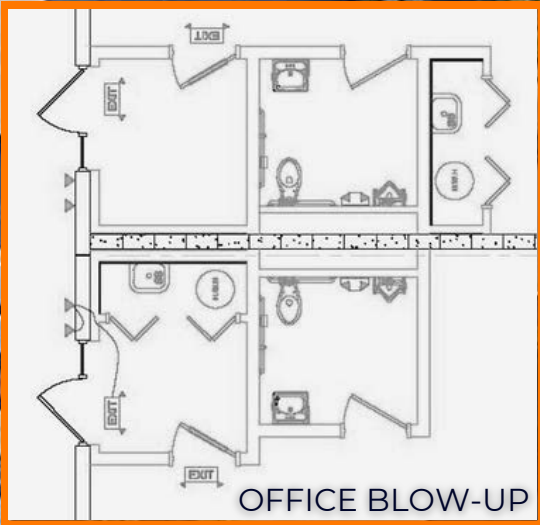


- MINIMAL OFFICE
- BUILT IN 1989
- THREE (3) LOADING DOCKS
- 40' X 40' COLUMNS
- 22' CLEAR HEIGHT
- .33/3,000 SPRINKLER SYSTEM
- 400 AMP, 480V ELECTRICAL SERVICE
- TOTAL BUILDING: 51,200 SF
- AMPLE PARKING

AVAILABLE
NOVEMBER 2026

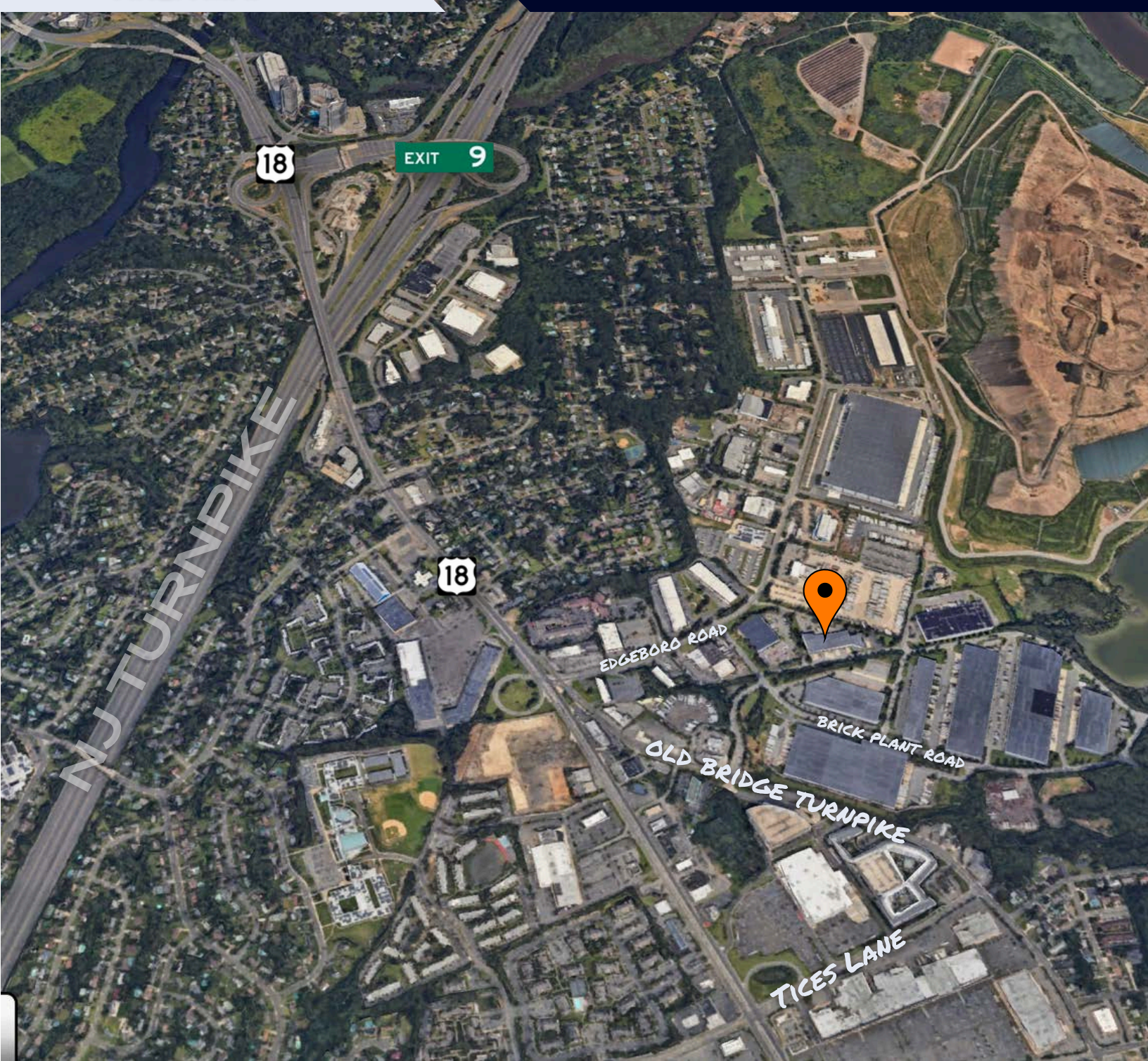
17 EDGEBORO ROAD EAST BRUNSWICK, NJ

SITE PLAN



17 EDGEBORO ROAD EAST BRUNSWICK, NJ

AREA MAP



FOR MORE INFORMATION

JASON FISCH, BROKER | VICE PRESIDENT OF LEASING
☎ 732-258-3400 ✉ JASON.FISCH@GREEKREP.COM

PATRICK REISTROM | SENIOR LEASING ASSOCIATE
☎ 732-609-5829 ✉ PATRICK.REISTROM@GREEKREP.COM



1 KIMBERLY ROAD, SUITE 105
EAST BRUNSWICK, NJ 08816

