



17 EDGEBORO ROAD

EAST BRUNSWICK, NJ

32,000 SF

DRIVE-TIMES

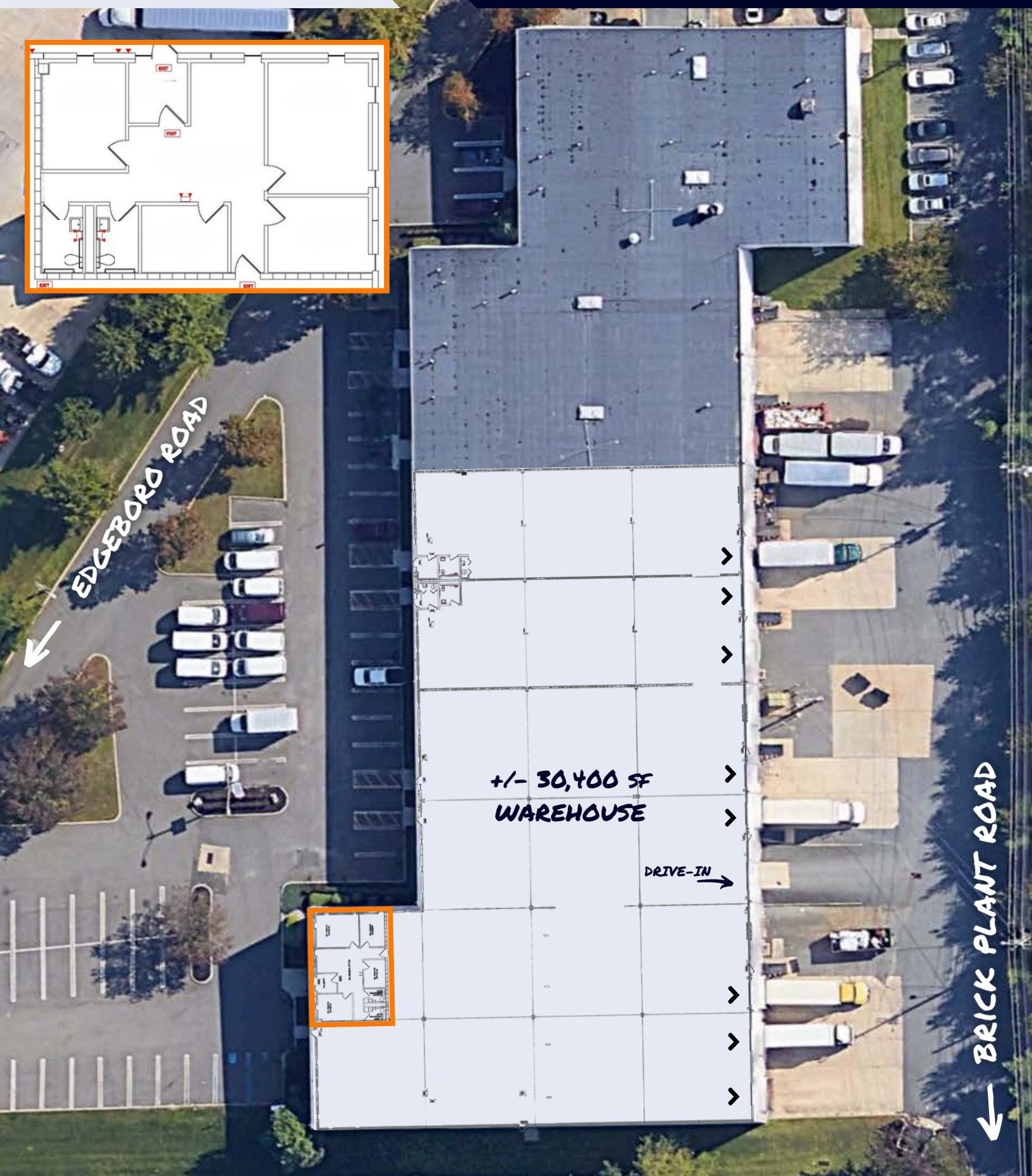
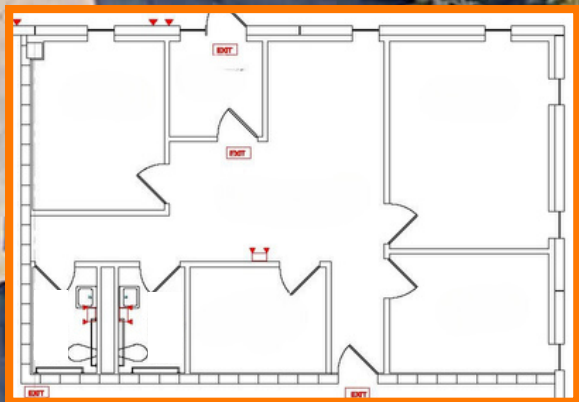


- +/- 1,600 SF OFFICE
- +/- 30,400 SF WAREHOUSE
- BUILT IN 1989
- EIGHT (8) LOADING DOCKS
- ONE (1) DRIVE-IN
- 40' X 40' COLUMNS
- 22' CLEAR HEIGHT
- .33/3,000 SPRINKLER SYSTEM
- 400 AMP, 480V ELECTRICAL SERVICE
- TOTAL BUILDING: 51,200 SF
- AMPLE PARKING

17 EDGEBORO ROAD

EAST BRUNSWICK, NJ

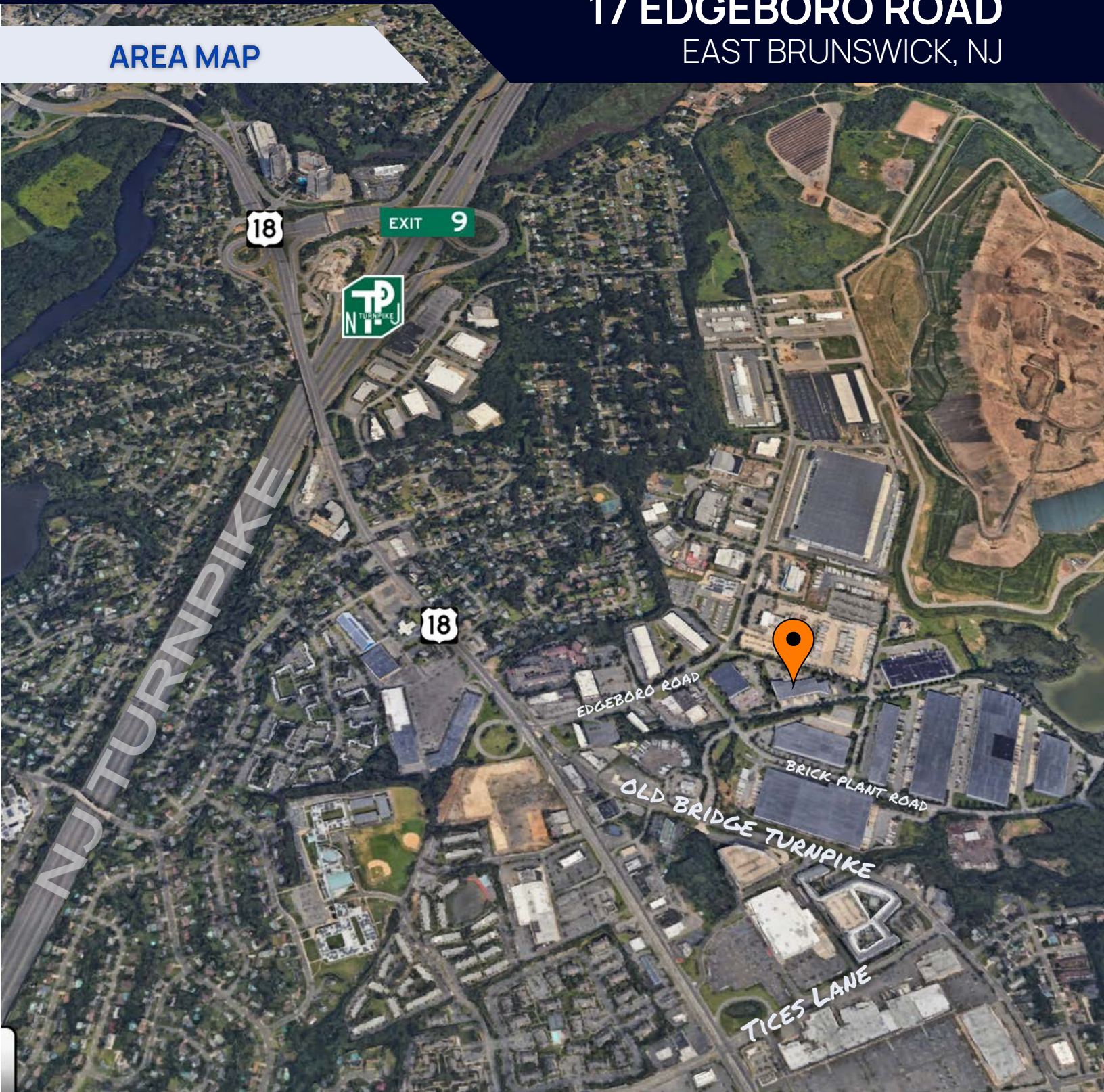
SITE PLAN



AREA MAP

17 EDGEBORO ROAD

EAST BRUNSWICK, NJ



FOR MORE INFORMATION

JASON FISCH, BROKER | VICE PRESIDENT OF LEASING
📞 732-258-3400 ✉️ JASON.FISCH@GREEKREP.COM

PATRICK REISTROM | SENIOR LEASING ASSOCIATE
📞 732-609-5829 ✉️ PATRICK.REISTROM@GREEKREP.COM



1 KIMBERLY ROAD, SUITE 105
EAST BRUNSWICK, NJ 08816



GreekREP.com